



# Insect Study

Scout's Name: \_\_\_\_\_

Date: \_\_\_\_\_

Counselor: Jill Stites [jstites@lcfpd.org](mailto:jstites@lcfpd.org) 847-968-3323

21950 N. Riverwoods Rd., Riverwoods 60015

1) What are the characteristics of an insect?

---

---

---

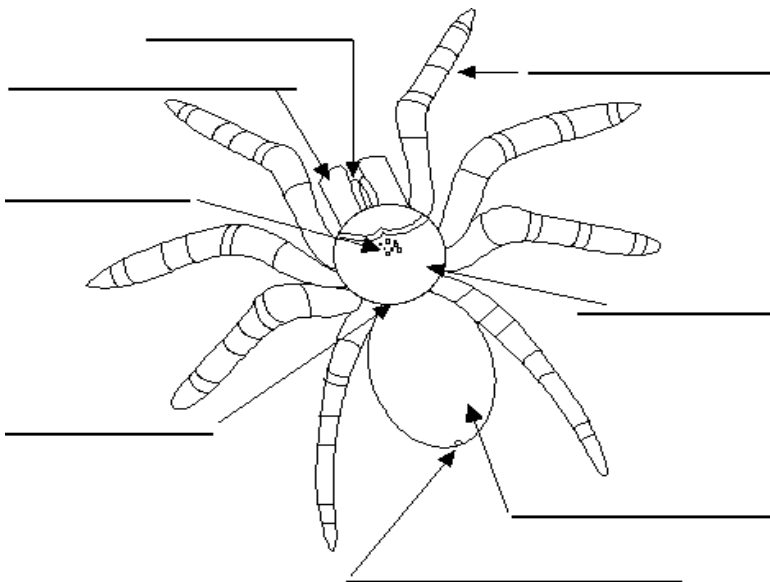
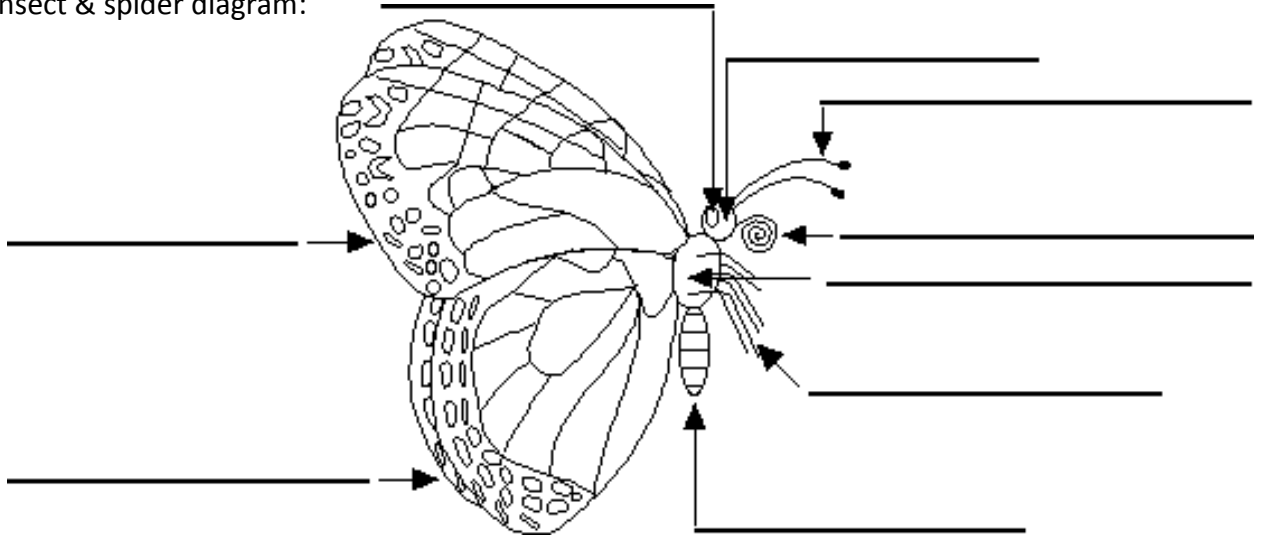
How are insects different from centipedes & spiders?

---

---

---

2) Label the insect & spider diagram:



3) Describe the characteristics that distinguish the principal families and orders of insects.

Orthoptera: \_\_\_\_\_

\_\_\_\_\_

Homoptera: \_\_\_\_\_

\_\_\_\_\_

Hemiptera: \_\_\_\_\_

\_\_\_\_\_

Odonata: \_\_\_\_\_

\_\_\_\_\_

Lepidoptera: \_\_\_\_\_

\_\_\_\_\_

Diptera: \_\_\_\_\_

\_\_\_\_\_

Coleoptera: \_\_\_\_\_

\_\_\_\_\_

Hymenoptera: \_\_\_\_\_

\_\_\_\_\_

4a) Observe 20 different insects, including at least 4 orders.

Insect	Order	Insect	Order
1. _____	_____	2. _____	_____
3. _____	_____	4. _____	_____
5. _____	_____	6. _____	_____
7. _____	_____	8. _____	_____
9. _____	_____	10. _____	_____

11. \_\_\_\_\_ 12. \_\_\_\_\_  
13. \_\_\_\_\_ 14. \_\_\_\_\_  
15. \_\_\_\_\_ 16. \_\_\_\_\_  
17. \_\_\_\_\_ 18. \_\_\_\_\_  
19. \_\_\_\_\_ 20. \_\_\_\_\_

**4b)** Make a scrapbook of the 20 insects, include photos, sketches. Label each insect with order, common & scientific names where possible.

**5)** Identify which insects/spiders are helpful or harmful to humans. Explain 4 methods of insect control.

Biological: \_\_\_\_\_

Chemical: \_\_\_\_\_

Mechanical: \_\_\_\_\_

Cultural: \_\_\_\_\_

**6)** Compare life cycles of a butterfly and a grasshopper.

Butterfly

Stages: \_\_\_\_\_

Grasshopper

Stages: \_\_\_\_\_

How they are different? \_\_\_\_\_

What is similar in each? \_\_\_\_\_

Name another insect with similar stages to a butterfly \_\_\_\_\_

grasshopper \_\_\_\_\_

**7)** Observe a beehive. Tell what you saw.

\_\_\_\_\_  
\_\_\_\_\_  
\_\_\_\_\_

**8)** The forest preserve does not support collecting of any insect to observe the metamorphosis process. Taking caterpillars from the wild to raise often results in failure. To better help insects survive we suggest this activity be replaced with a habitat restoration project. Search our website for restoration workdays or see the calendar for dates and locations. [www.LCFPD.org](http://www.LCFPD.org) . If you have participated in previous butterfly raising such as a school project, that will count for #8.

**9)** Tell 3 differences between social insects and solitary insects. Name 2 examples of each.

---

---

---

---

**10)** Draw an example of the food chain you created.

**11)** Research the education, training and experience required for the following careers:

Educator: \_\_\_\_\_

---

---

Scientist: \_\_\_\_\_

---

---

Exterminator: \_\_\_\_\_

---

---