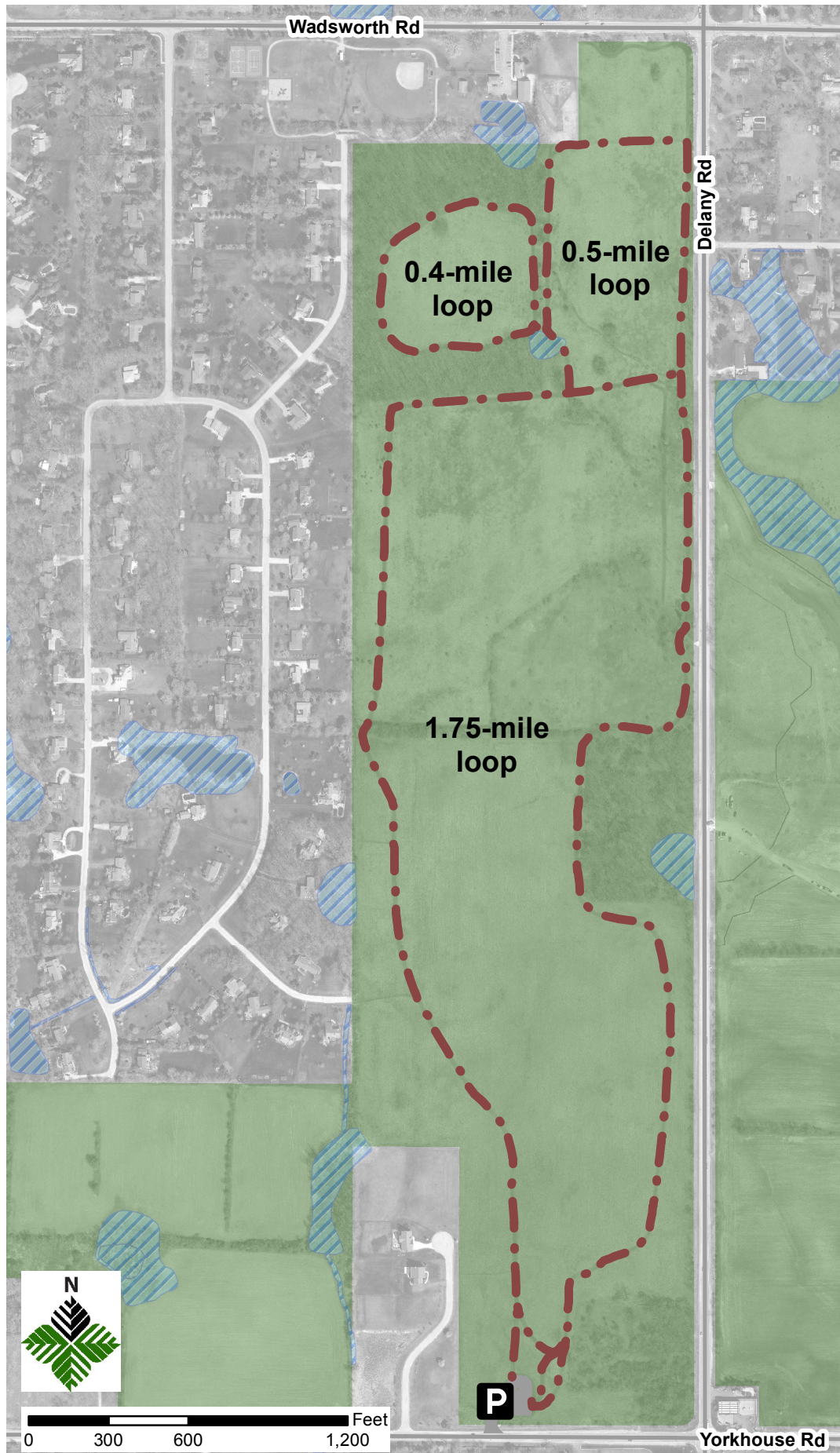


Dog Sled Area

Lake County Forest Preserves

847-367-6640

www.LCFPD.org



Dog Sled Area at Waukegan Savanna 140 acres

Activities

Permit required:
847-367-6640 or
LCFPD.org

- Dog Sledding
- Horse-Drawn Sleighs or Carts
- Skijoring

In the warmer months, and when winter conditions are not good for dog sledding, trails are open to hikers and cross-country skiers.

Legend

- Forest Preserve Boundary
- Mowed Trails (2.8 miles)
- Wetlands
- Parking

Emergency: 911
Nonemergency: 847-549-5200

On Yorkhouse Road west of Delany Road, in Wadsworth.
(GPS 42°24'51.368"N 87°54'25.15"W)

Prepared 18 October 2013