

Name: \_\_\_\_\_



# What does an Archaeologist Study?



**Directions:** Below are a number of pictures showing things that an Archaeologist, Paleontologist, or Geologist might study. Circle each item in a color corresponding to the occupation that would study it. Red for Archaeology, Blue for Paleontology, and Green for Geology. Are there any items that should not be circled? Are there any items that could be studied by more than one occupation for different reasons?



Bison Skull



Clay Pot



Human Brain



Dinosaur Skeleton



Volcano



Cave Painting



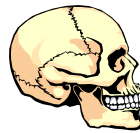
Space Shuttle



Animal Bone



Rock Art



Human Skull



Stonehenge



Earth's Crust



Dinosaur Skull



Foot Bone



T-Rex



Bison Horn



Pottery Sherd



Bear Tooth



Papyrus Scroll



Stone Tools



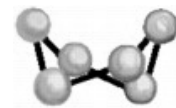
Earth Quake



Prehistoric Frog



Deer Antler



Molecule



Rocks and Minerals



Burial Mask



Plant Fossil



Pyramids



Traditional Rituals

Name: \_\_\_\_\_



# What does an Archaeologist Study?



## Answer Key

**Directions:** Below are a number of pictures showing things that an Archaeologist, Paleontologist, or Geologist might study. Circle each item in a color corresponding to the occupation that would study it. Red for Archaeology, Blue for Paleontology, and Green for Geology. Are there any items that should not be circled? Are there any items that could be studied by more than one occupation for different reasons?



Bison Skull



Clay Pot



Human Brain



Dinosaur Skeleton



Volcano



Cave Painting



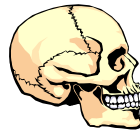
Space Shuttle



Animal Bone



Rock Art



Human Skull



Stonehenge



Earth's Crust



Dinosaur Skull



Foot Bone



T-Rex



Bison Horn



Pottery Sherd



Bear Tooth



Papyrus Scroll



Stone Tools



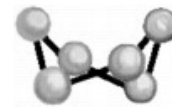
Earth Quake



Prehistoric Frog



Deer Antler



Molecule



Rocks and Minerals



Burial Mask



Plant Fossil



Pyramids



Traditional Rituals

Name: \_\_\_\_\_