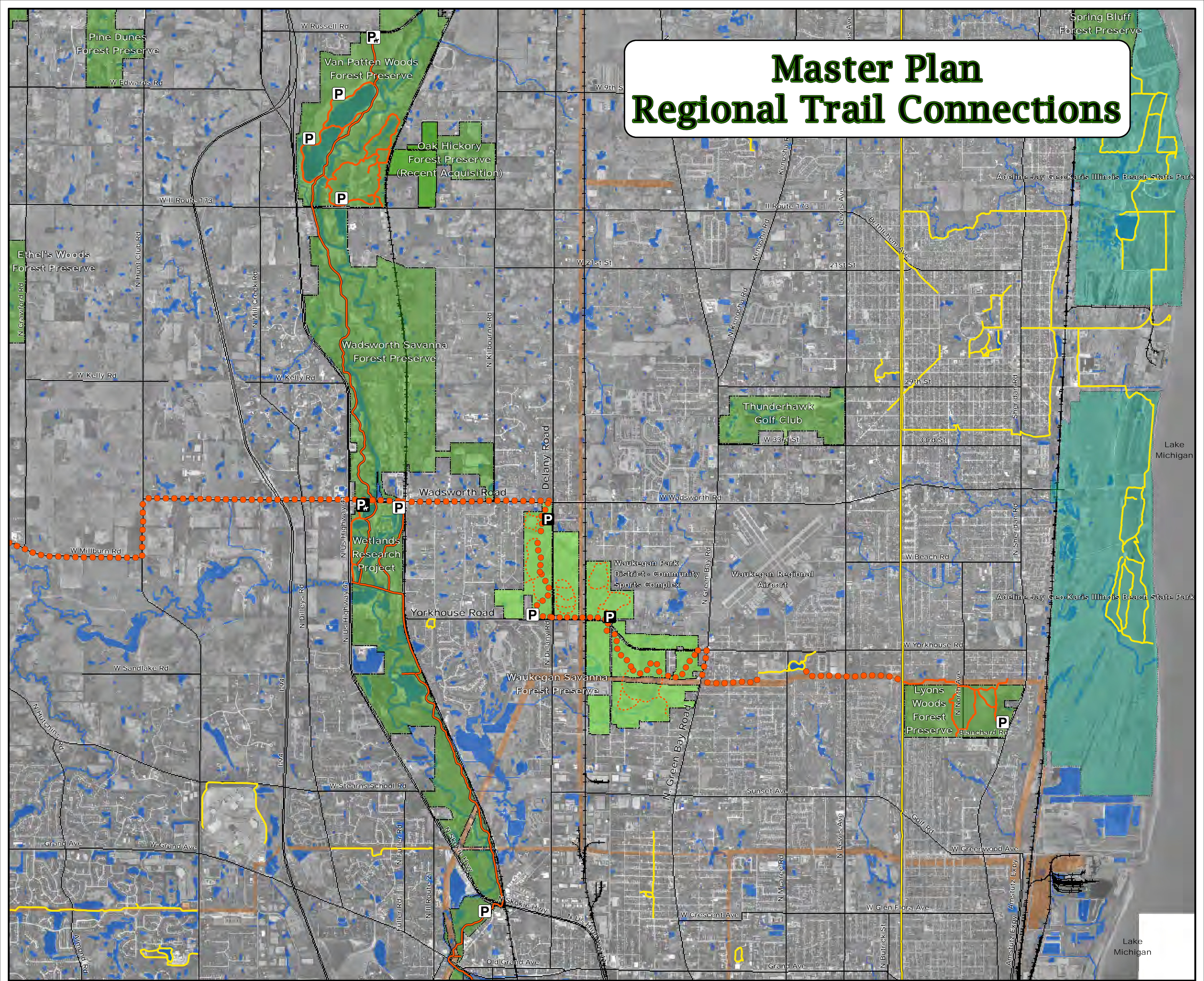


# Master Plan Regional Trail Connections



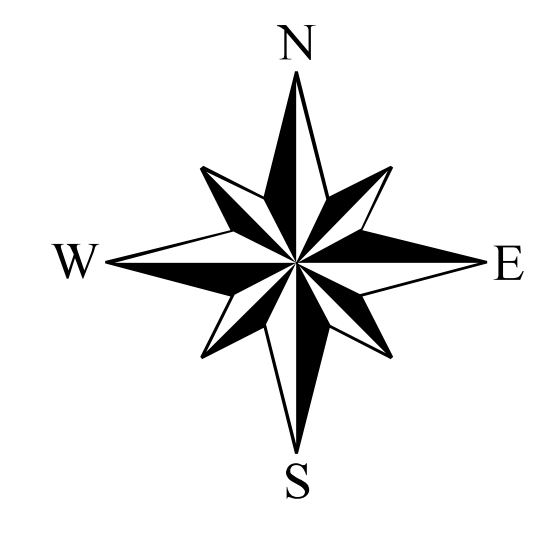
## Waukegan Savanna Forest Preserve

- Regional Trail - Proposed
- DesPlaines River Trail & Connections
- Forest Preserve Trail - Proposed
- Robert McClory Bike Path
- Forest Preserve Trail
- Other Trails - State or Local

- Forest Preserve Boundary
- Waukegan Savanna
- Forest Preserve
- State Park
- Major Water Body
- Major Roads
- Railroad

- ComEd
- Proposed Trailhead Parking Lot
- Proposed Expanded Trailhead/Horse Trailer Parking Lot
- Existing Forest Preserve Parking Lot & Trail Access
- Existing Forest Preserve Horse Trailer Parking Lot

NOTE:  
The Regional Trail Connection that is located within Waukegan Savanna Forest Preserve will be completed as part of the Master Plan implementation. The segments located outside of the preserve will be completed as possible through public-private partnerships and implemented when planning has been completed and funding has been allocated.



**Lake County Forest Preserves**  
www.LCFPD.org

Planning, Conservation & Development Department  
32492 North Almond Road  
Graylake, IL 60030  
(847) 968-6301

0 0.5 1 Miles

2007 Aerial Photograph  
Forest Preserve Board Approved - September 14, 2010